

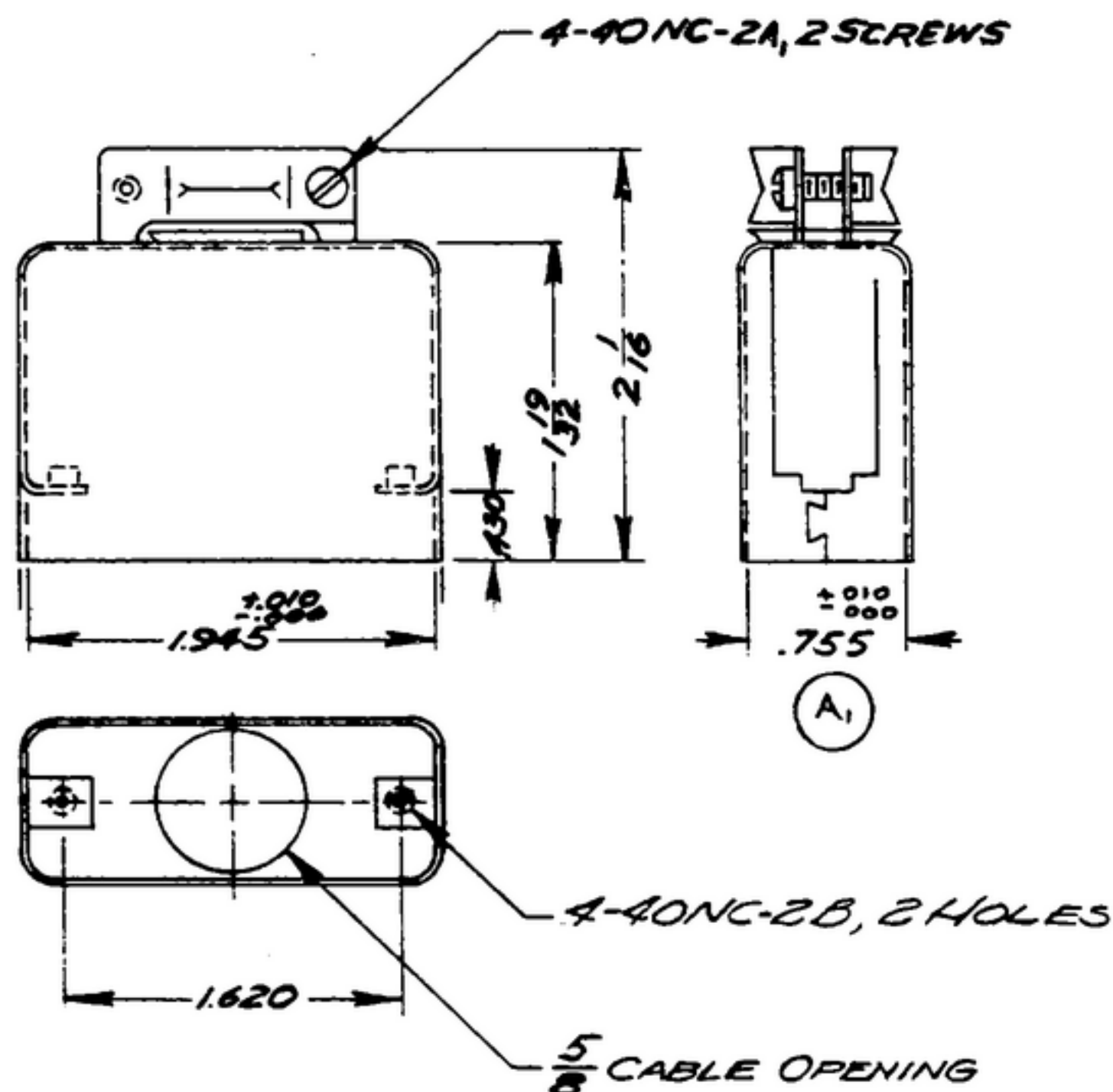
NOTICE: WHEN GOVERNMENT DRAWINGS, SPECIFICATIONS, OR OTHER DATA ARE USED FOR ANY PURPOSE OTHER THAN IN CONNECTION WITH A DEFINITELY RELATED GOVERNMENT PROCUREMENT OPERATION, THE UNITED STATES GOVERNMENT THEREBY INCURS NO RESPONSIBILITY FOR ANY DELAMINATION WHATSOEVER; AND THE FACT THAT THE GOVERNMENT MAY HAVE FORMULATED, FURNISHED, OR IN ANY WAY SUPPLIED THE SAID DRAWINGS, SPECIFICATIONS, OR OTHER DATA IS NOT TO BE REGARDED BY IMPLICATION OR OTHERWISE AS IN ANY MANNER LICENSING THE HOLDER OR ANY OTHER PERSON OR CORPORATION, OR CONVEYING ANY RIGHTS OR PERMISSION TO MANUFACTURE, USE, OR SELL ANY PATENTED INVENTION THAT MAY IN ANY WAY BE RELATED THERETO.

THIS DOCUMENT HAS BEEN PURCHASED BY THE GOVERNMENT AND MAY BE REPRODUCED AND USED IN CONNECTION WITH ANY GOVERNMENT PROCUREMENT OR MAINTENANCE OPERATION.

\* FOR INFORMATION ONLY. CONTRACTOR MAY AT HIS OPTION DEVIATE FROM THESE PROCESS DETAILS.

*X SWE APPROVAL*  
*SYM PR 10042-G*

REVISIONS			
SYM	DESCRIPTION	DATE	APPROVAL
A <sub>4</sub>	A <sub>1</sub> WAS .758 ±.010 A <sub>2</sub> ADDED NOTE 2 A <sub>3</sub> WAS 26-962 A <sub>4</sub> WAS M262	15 OCT 59	42428-PC 59-A1-51 REV'D PME



NOTES

1. PART MAY BE 126-954 AS SUPPLIED BY AMERICAN PHENOLIC CORP, CHICAGO, ILL., OR EQUAL, PROVIDING IT MEETS THE FOLLOWING REQUIREMENTS AND DIMENSIONS SHOWN.

DESCRIPTION: COVER ASSY. FOR 20 CONTACT PLUG CONNECTOR  
MATERIAL: 0.040 ALUMINUM ALLOY  
CABLE CLAMP SCREWS: STEEL, FINISH M262A PER SPEC MIL-F-1407E  
COVER FINISH: E511 PER SPEC MIL-F-1407E

2. COVER SHALL MEET THE APPLICABLE REQUIREMENTS OF MIL-C-8384 EXCEPT WHERE AMENDED BY THE SPECIFICATION

COLLINS PART NO.	ITEM	REQD.	PART NO.	DESCRIPTION	MATL.	MATL. SPEC.
LIST OF MATERIAL						
COLLINS PART NO. <i>5590291002</i>						

DRAWN <i>R. E. B.</i>				CHECKED <i>[Signature]</i>		APPROVED		-COLLINS-RADIO CO.- -ORRAN-RAPID-OWA- <i>14214-PH-51-95</i>		DEPARTMENT OF THE ARMY SIGNAL CORPS ENGINEERING LABORATORIES  FORT MONMOUTH NEW JERSEY  <i>SM-B-283190</i>	
UNLESS OTHERWISE SPECIFIED: DECIMAL DIMENSIONS INCLUDING HOLE SIZES MAY VARY ±.005 FRACTIONAL DIMENSIONS INCLUDING HOLE SIZES MAY VARY ±1/64 MACHINED ANGLES MAY VARY ±.1° SHEARED ANGLES MAY VARY ±.25° BROKEN ANGLES MAY VARY ±1.° ECCENTRICITY BETWEEN ANY DIAMETERS ON THE SAME CENTERLINE SHALL NOT EXCEED .010 TOTAL INDICATOR READING. ALL DIMENSIONS ARE FINISH DIMENSIONS INCLUDING APPLIED FINISH AND ARE GIVEN IN INCHES.								SIGNAL CORPS			
558-0455004-1 SM-D-283190 SC-DL-248715								REVIEWED <i>PME</i>			
-COLLINS NO. - QTY - NEXT ASSY - USED ON								APPROVED <i>HLY</i> <i>PME</i>			
APPLICATION				DATE <i>16 JAN '56</i>		SCALE <i>1/1</i>					